

Load Capacity of Nitto® NT05R™ and NT555®R11 Tires

Nitto Tire U.S.A. Inc. is introducing the following sizes in the NT05R™ and NT555®R11 Drag Radial product line that are designed using the Light Load (LL) standard of the Tire and Rim Association (T.R.A.);

P275/40R17 P305/45R18

P305/45R17 P315/40R18

P315/35R17 P335/30R18

P275/40R18 P345/30R19

P285/40R18 P315/35R20

Load Identification

Under the T.R.A.'s designation, tire load is divided into three categories: Light Load (LL), Standard Load (SL), and Extra Load (XL). Each refers to the tire's ability to carry a certain load at a given air pressure. Tires designed for LL, SL, XL duty are usually identified as such on the sidewall.

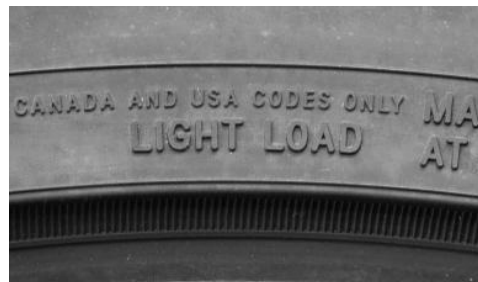


Figure 1 – Light Load molded into sidewall

CAUTION! A Light Load tire carries less load at the same inflation pressure as a standard load tire and has a lower maximum load capacity than the equivalent standard load size. Figure 2 below shows the different load capacities of the three different categories of tires of the same size.

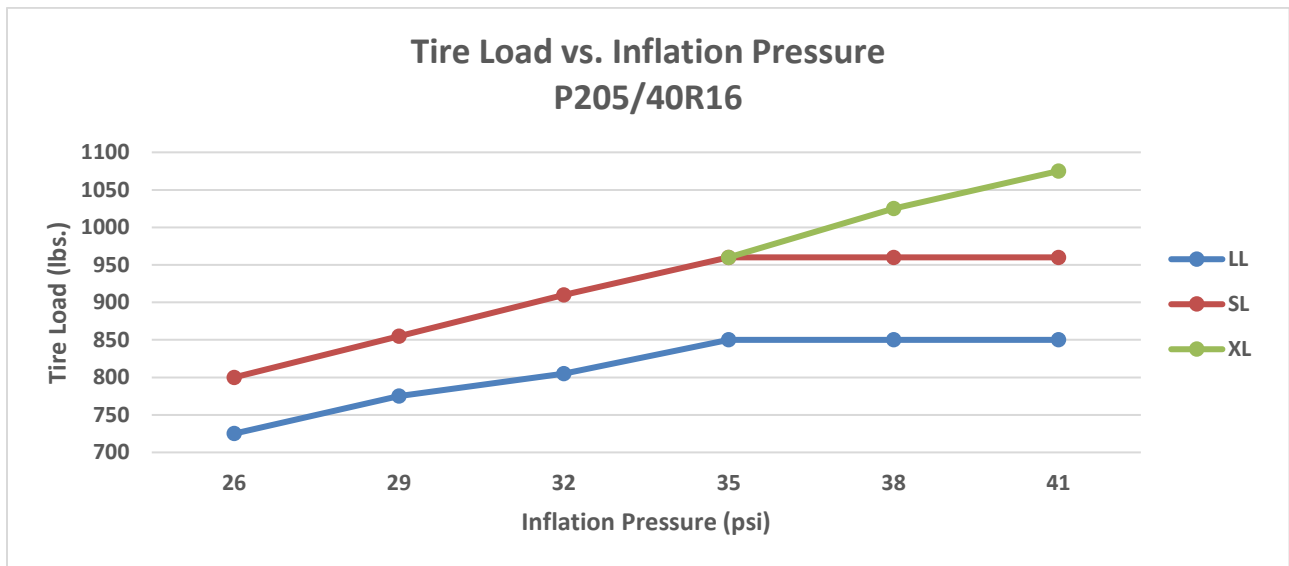


Figure 2 – Tire Load vs. Inflation Chart

General Advice for Determining Correct Inflation Pressure:

“Plus size” tires, including subject tires, may require higher inflation pressures than what is indicated on the vehicle Tire Information Placard or in the vehicle Owner’s Manual. Any “plus size” tire should be inflated to a pressure that provides equal or greater load capacity compared to the original equipment (O.E.) tire. Always refer to tire industry load & inflation tables to determine correct inflation values when installing “plus sizes”, or contact Nitto Tire for assistance.

 **WARNING**

Always observe this advice to avoid overloading the tire. Tire overload will contribute to tire fatigue and could lead to tire failure. Tire failure may lead to an accident, which may result in injury or death.

Single Load per tire in pounds:

Size		Tire Load Limit at Various Cold Inflation Pressures					
		PSI	26	29	32	35	36
P275/40R17	93LL	lbs.	1,235	1,301	1,367	1,433	
P305/45R17	102LL	lbs.	1,609	1,698	1,775	1,874	
P315/35R17	93LL	lbs.	1,246	1,323	1,378	1,433	
P275/40R18	94LL	lbs.	1,290	1,356	1,422	1,477	
P285/40R18	96LL	lbs.	1,367	1,444	1,510	1,565	
P305/45R18	103LL	lbs.	1,554	1,664	1,775	1,874	1,929
P315/40R18	102LL	lbs.	1,620	1,709	1,786	1,874	
P335/30R18	95LL	lbs.	1,312	1,378	1,444	1,521	
P345/30R19	98LL	lbs.	1,433	1,510	1,587	1,653	
P315/35R20	97LL	lbs.	1,301	1,389	1,477	1,565	1,609

Figure 3 – T.R.A. Load & Inflation Table

For more information, please contact Nitto Tire U.S.A. Inc.'s Consumer Relations Department at
(888) 529-8200.

Nitto Tire U.S.A Inc.
PO Box 6064
Cypress, CA 90630
www.nittotire.com

4/2020
Rev. 3

Item No. 12-005